



## IFJ. OCSKAY GÁBOR JÉGCSARNOK ÉPÜLETÉNEK ÁTALAKÍTÁSA ÉS ENERGETIKAI FELÚJÍTÁSA

### VÁZLATTERV

**AHEAD & DOT**

2025. 12. 15.



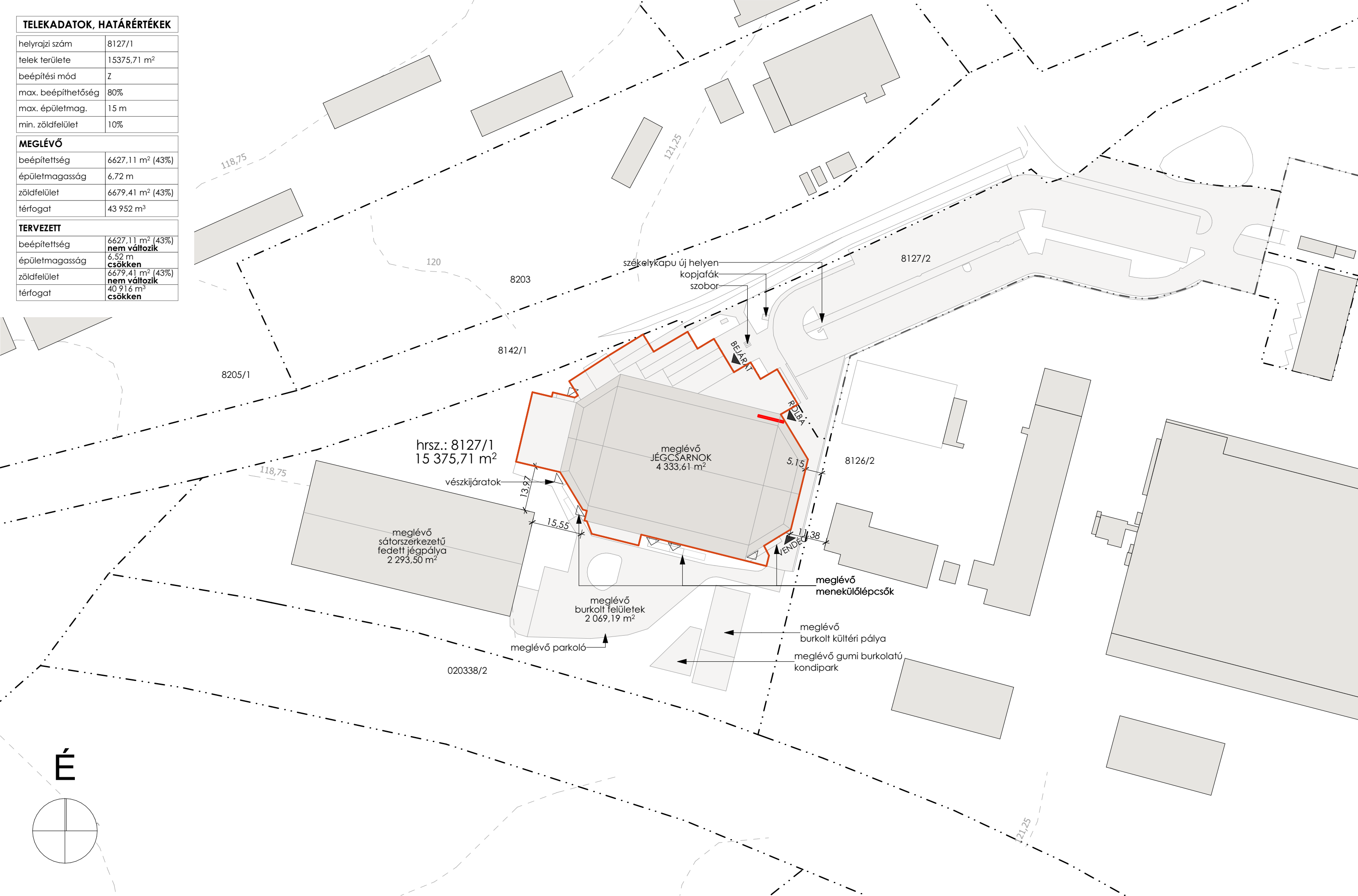


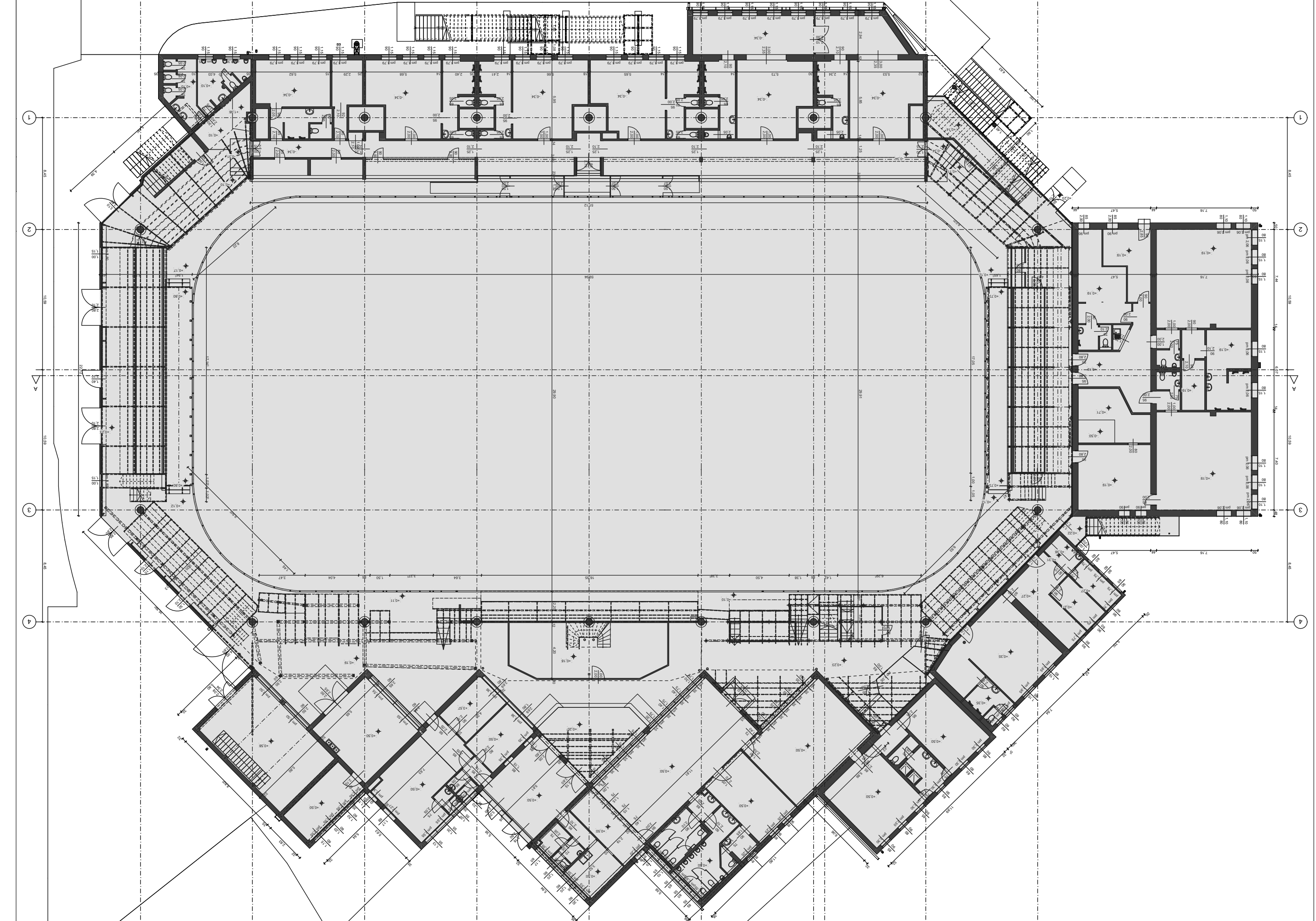


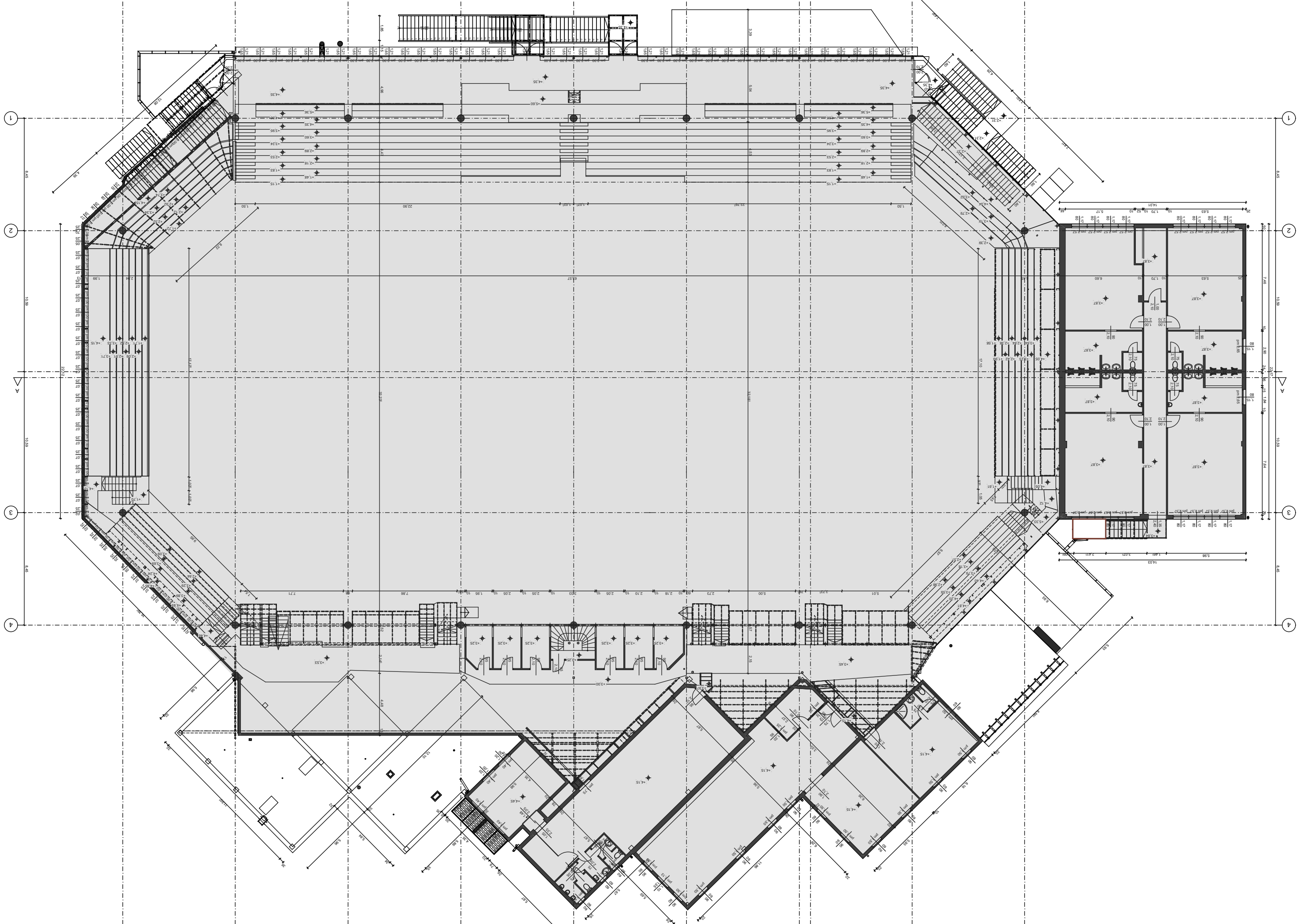




TELEKADATOK, HATÁRÉRTÉKEK	
helyrajzi szám	8127/1
telek területe	15375,71 m²
beépítési mód	Z
max. beépíthetőség	80%
max. épületmag.	15 m
min. zöldfelület	10%
MEGLÉVŐ	
beépítettség	6627,11 m² (43%)
épületmagasság	6,72 m
zöldfelület	6679,41 m² (43%)
térfogat	43 952 m³
TERVEZETT	
beépítettség	6627,11 m² (43%) <b>nem változik</b>
épületmagasság	6,52 m <b>csökken</b>
zöldfelület	6679,41 m² (43%) <b>nem változik</b>
térfogat	40 916 m³ <b>csökken</b>



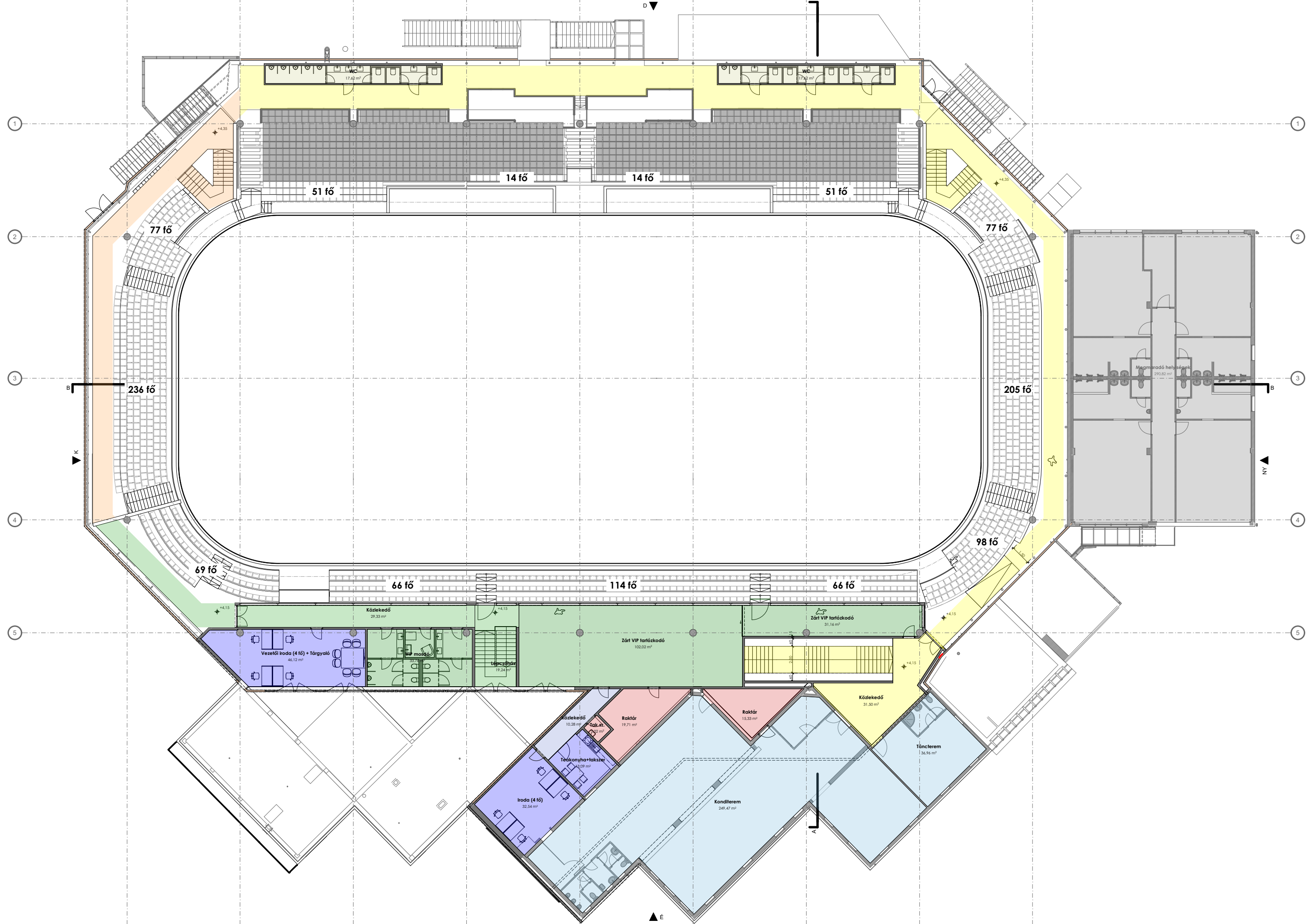




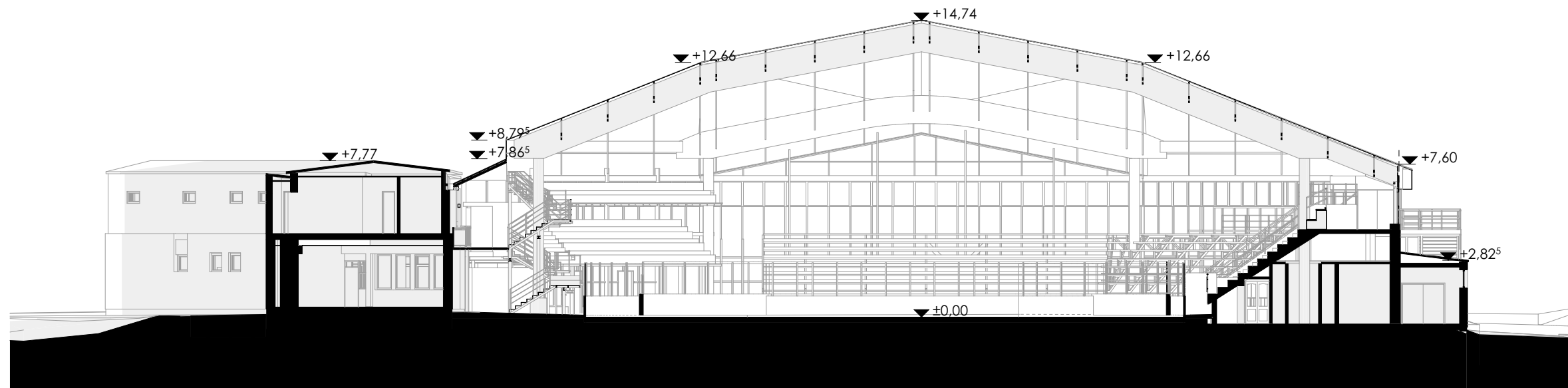
MEGLÉVŐ EMELETI ALAPRAJZ



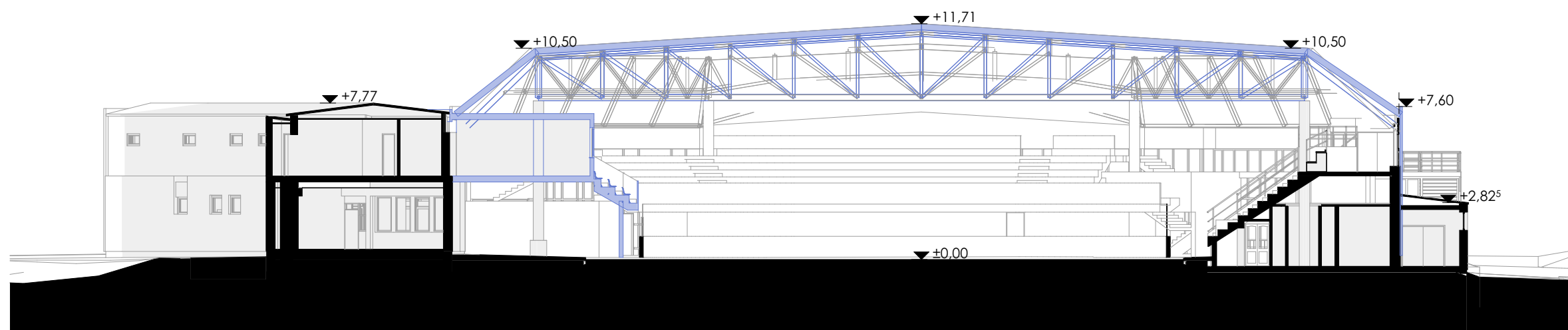






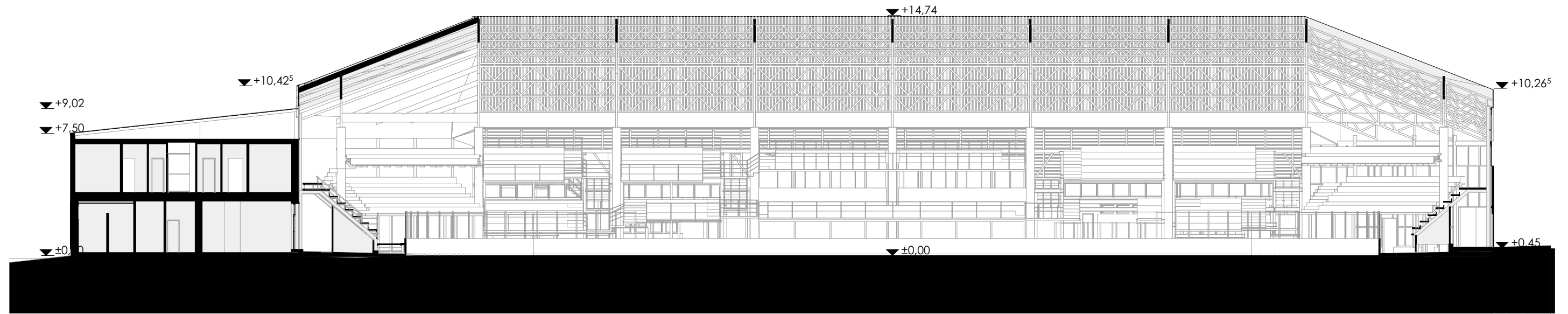


MEGLÉVŐ

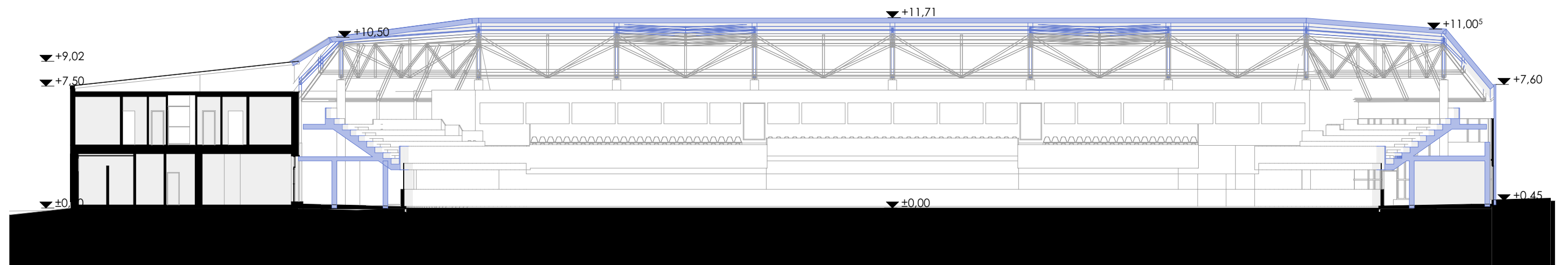


TERVEZETT



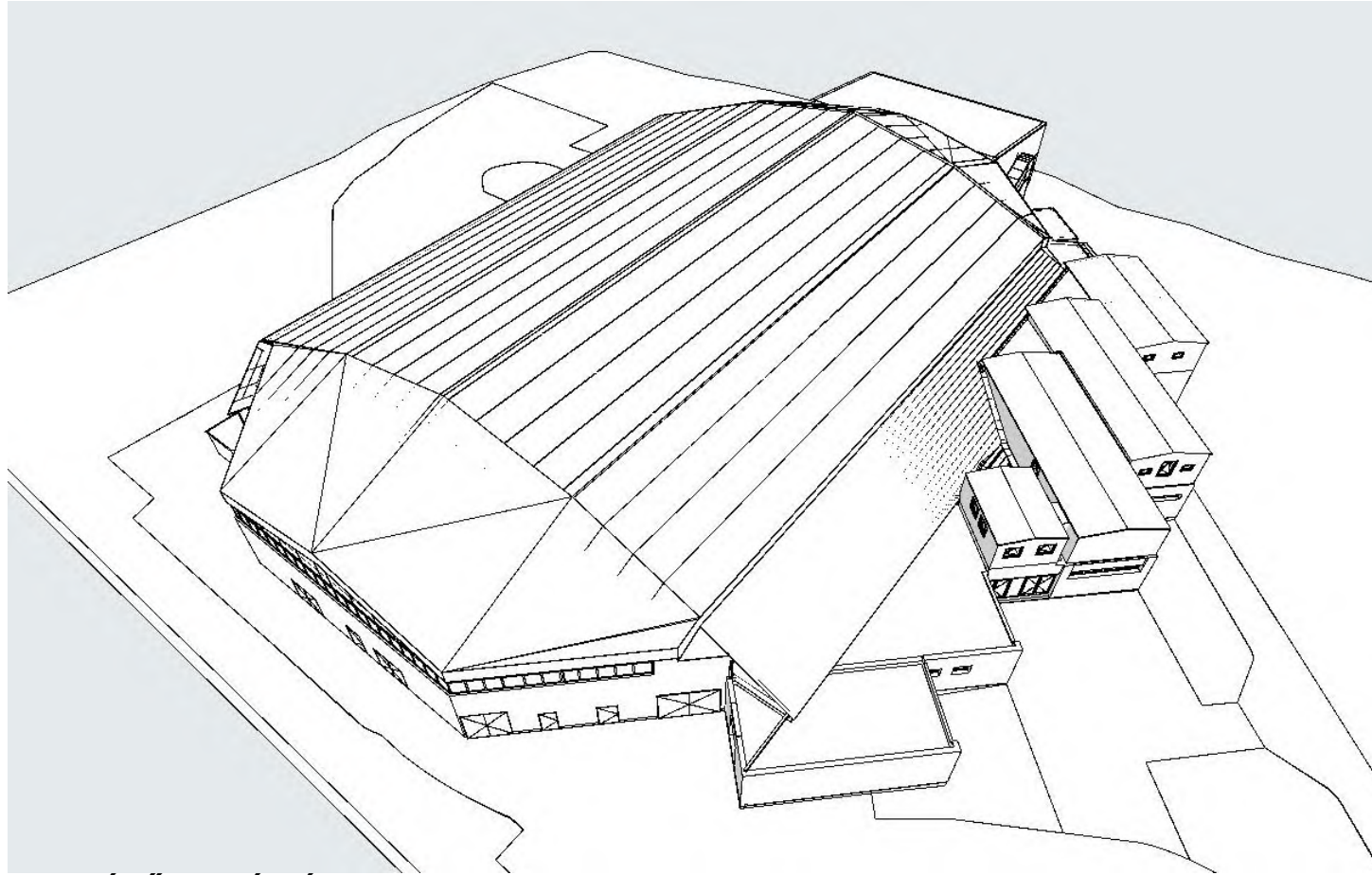


MEGLÉVŐ

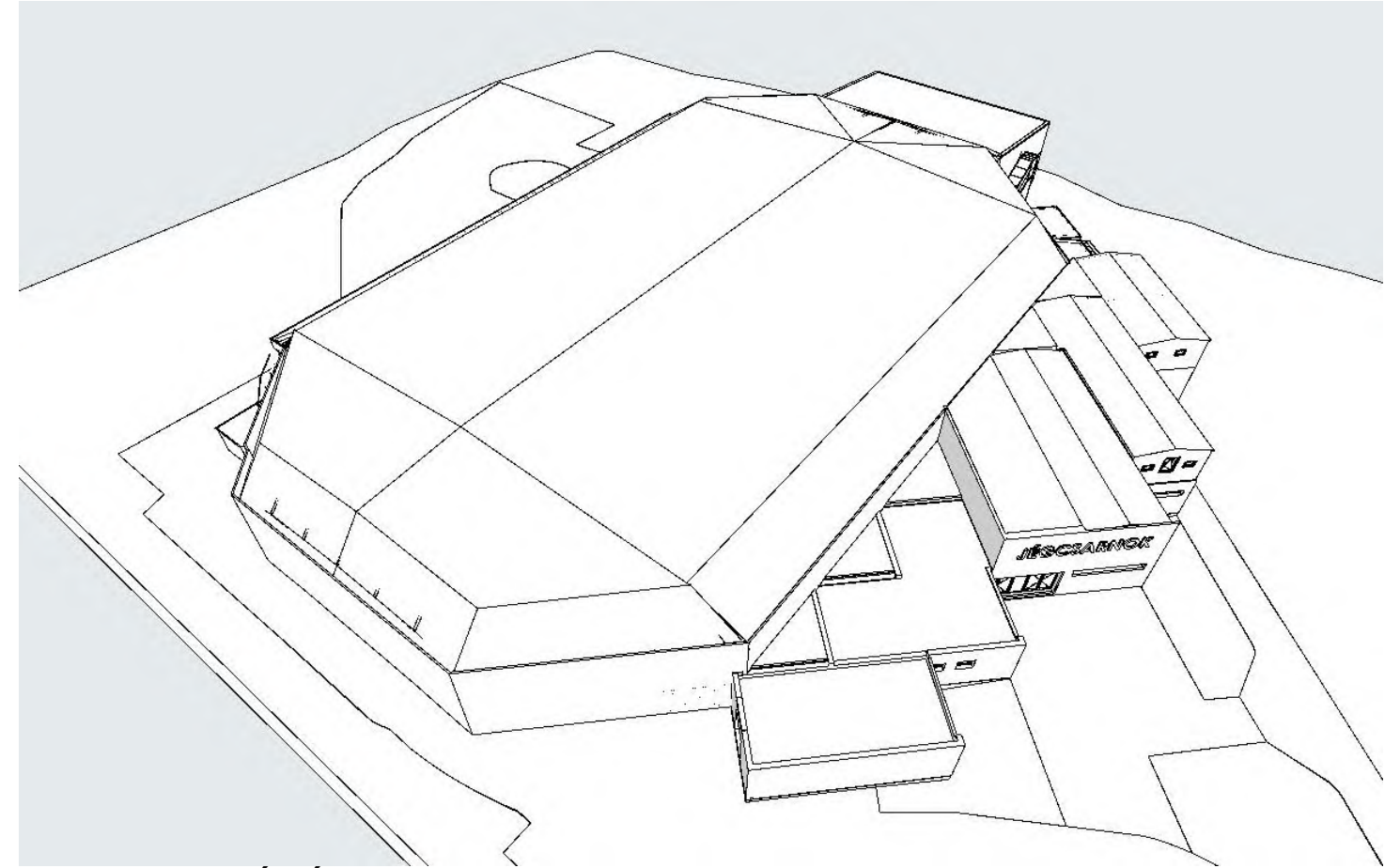


TERVEZETT



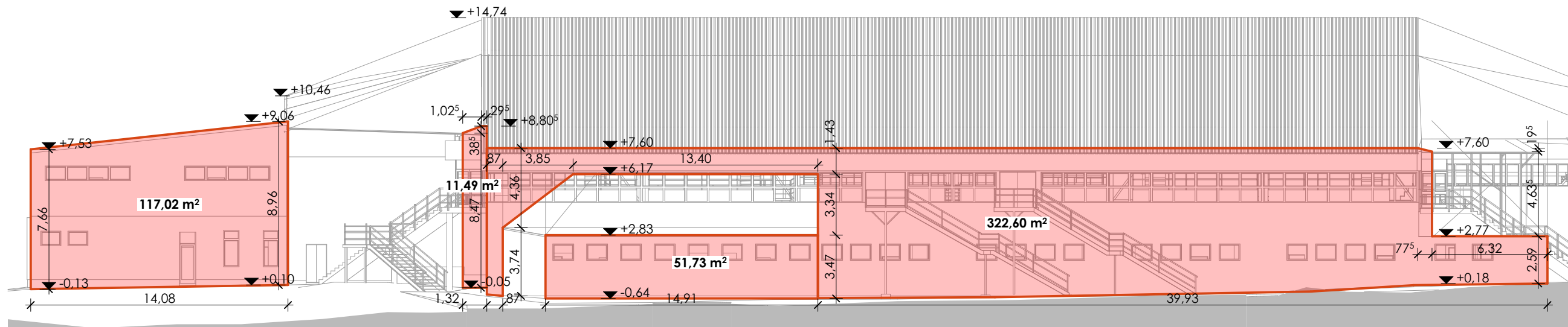


**MEGLÉVŐ MADÁRTÁVLAT**

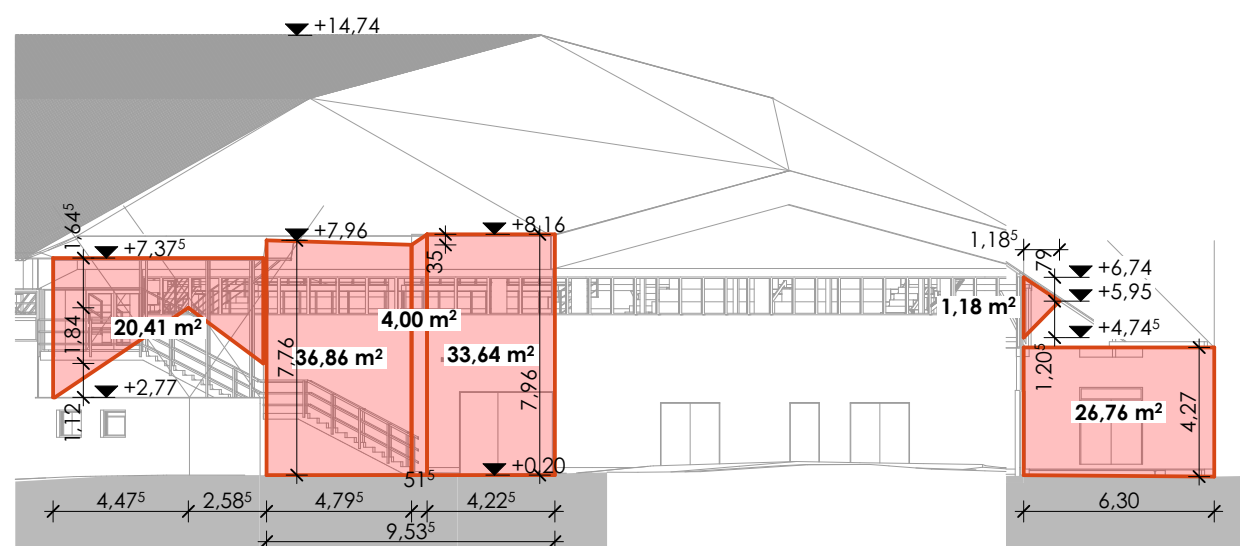


**TERVEZETT MADÁRTÁVLAT**

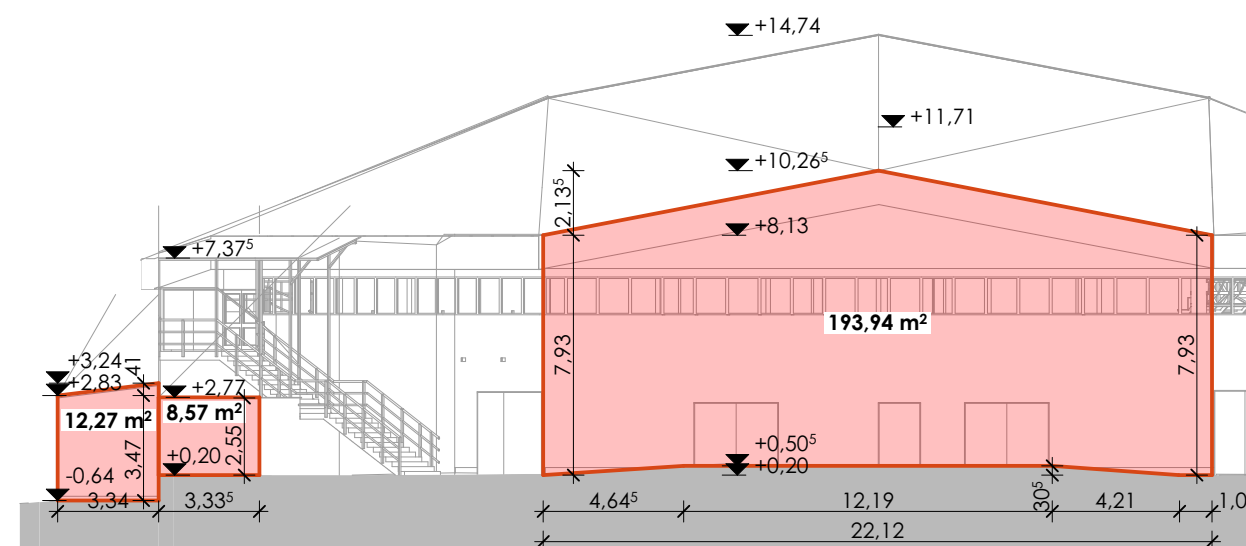




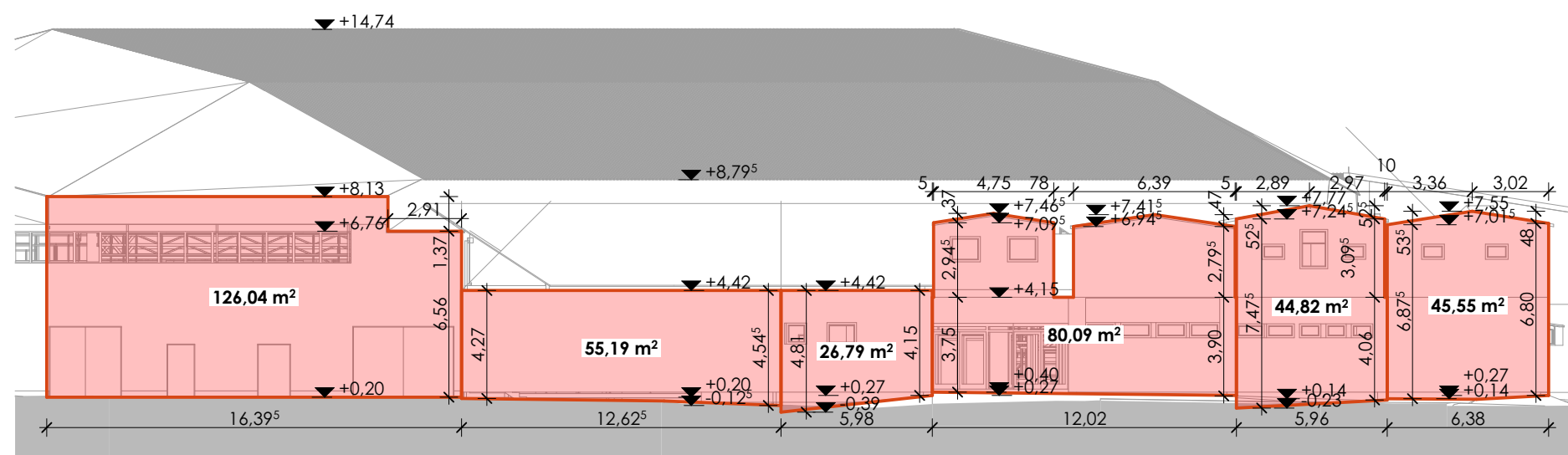
D



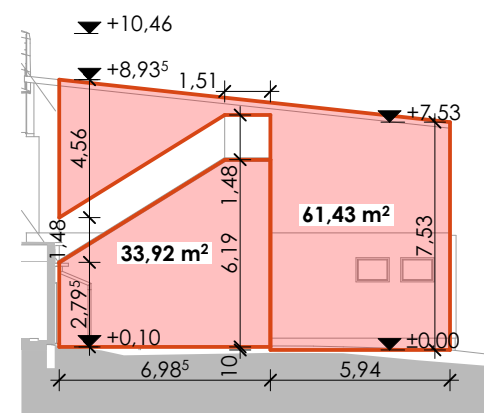
DK



K

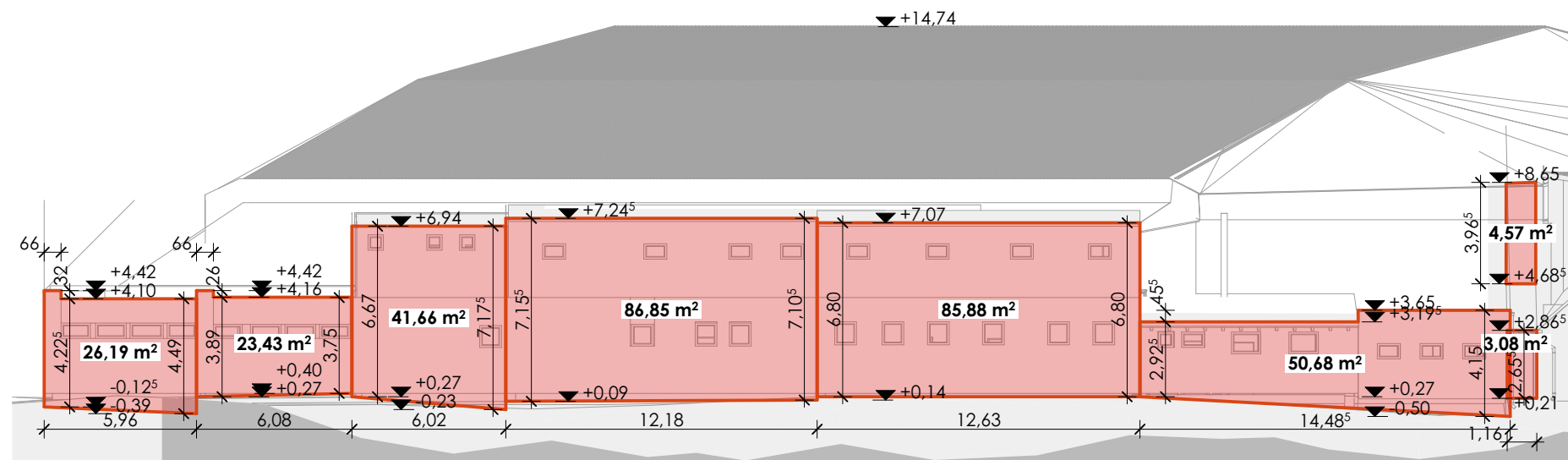


ÉK

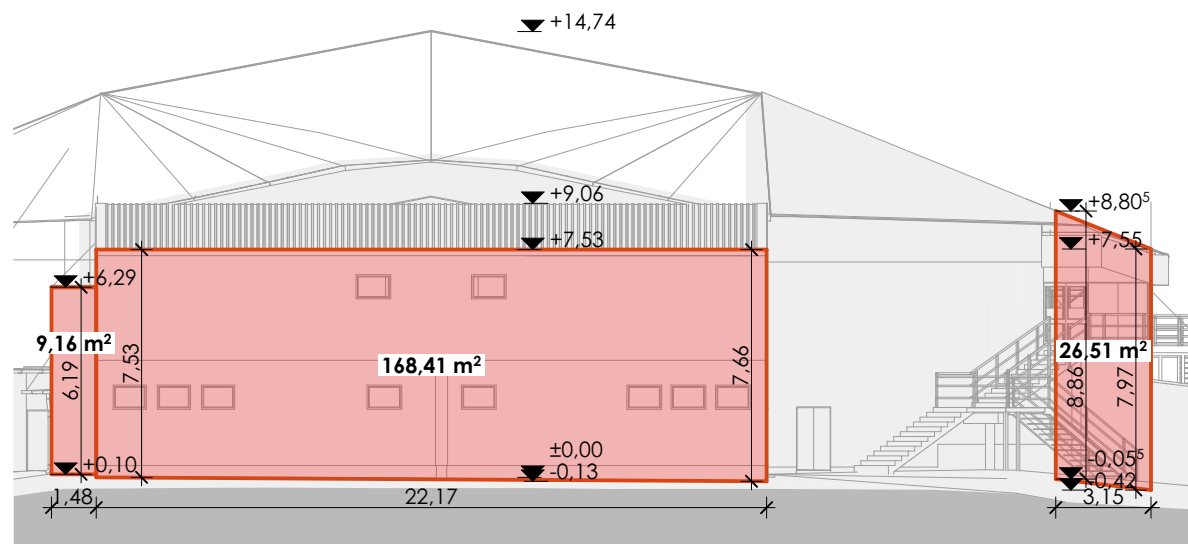


É





ÉNY



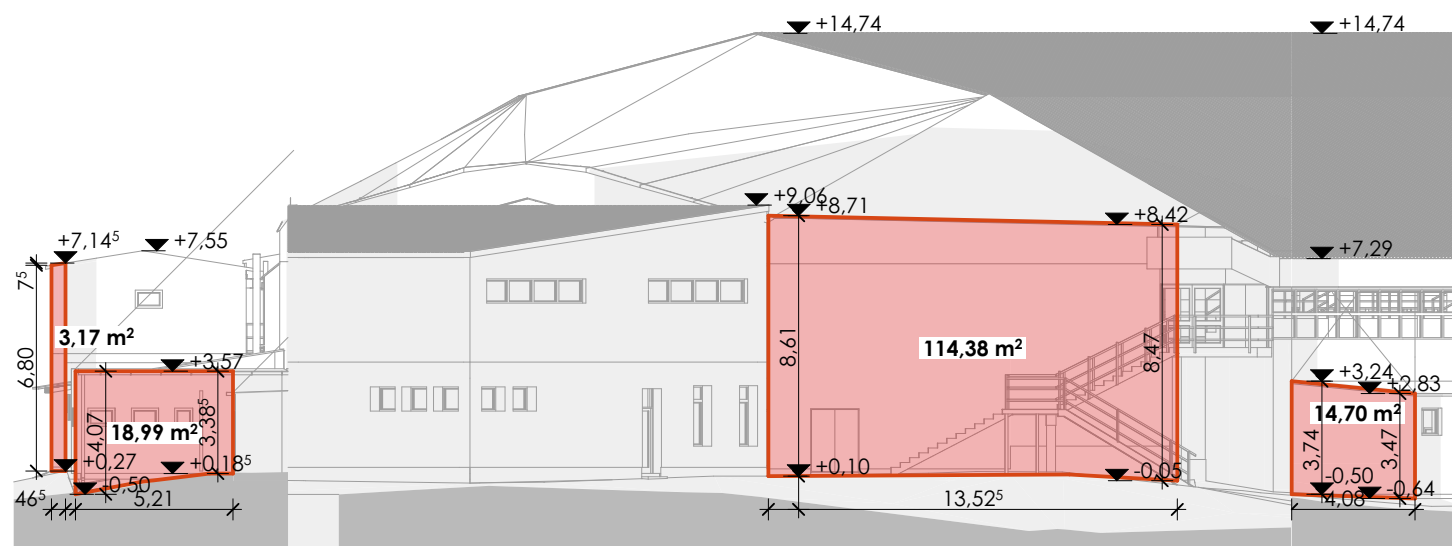
NY

MEGLÉVŐ BEÉPÍTÉSI MAGASSÁG:

homlokzati felület:  
117,02+11,49+51,73+322,60+20,41+36,86+4,00+33,64+26,76+1,18+12,27+8,57+193,94+126,04+55,19+26,79+80,09+44,82+  
+45,55+33,92+61,43+26,19+23,43+41,66+86,85+85,88+50,68+4,57+3,08+9,16+168,41+26,59+3,17+18,99+114,38+14,70=  
=1992,04 m²

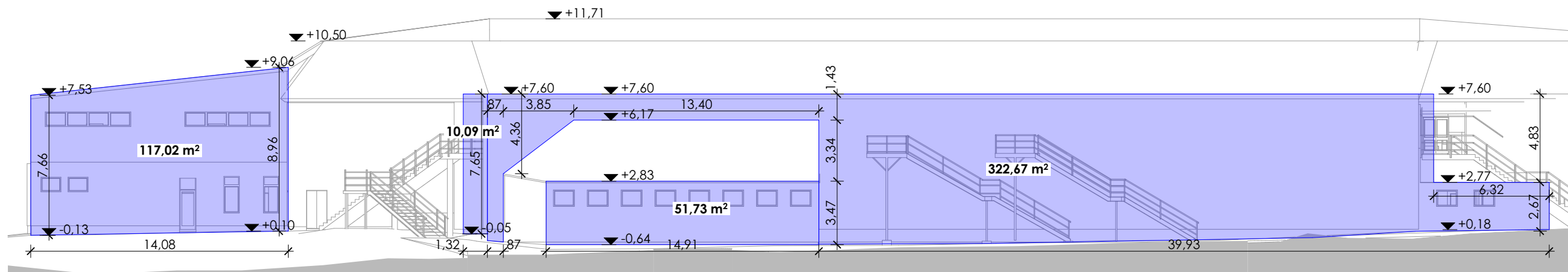
alaprajzi terület:  
14,08+1,32+0,87+14,91+39,93+9,54+6,30+3,34+3,33+22,12+16,40+12,62+5,98+12,02+5,96+6,38+  
+6,98+5,94+5,96+6,08+6,02+12,18+12,63+14,49+1,16+1,48+22,17+3,15+0,46+5,21+13,53+4,08=  
=296,62 m

beépítési magasság:  
 $1992,04/296,62 = 6,72 \text{ m}$

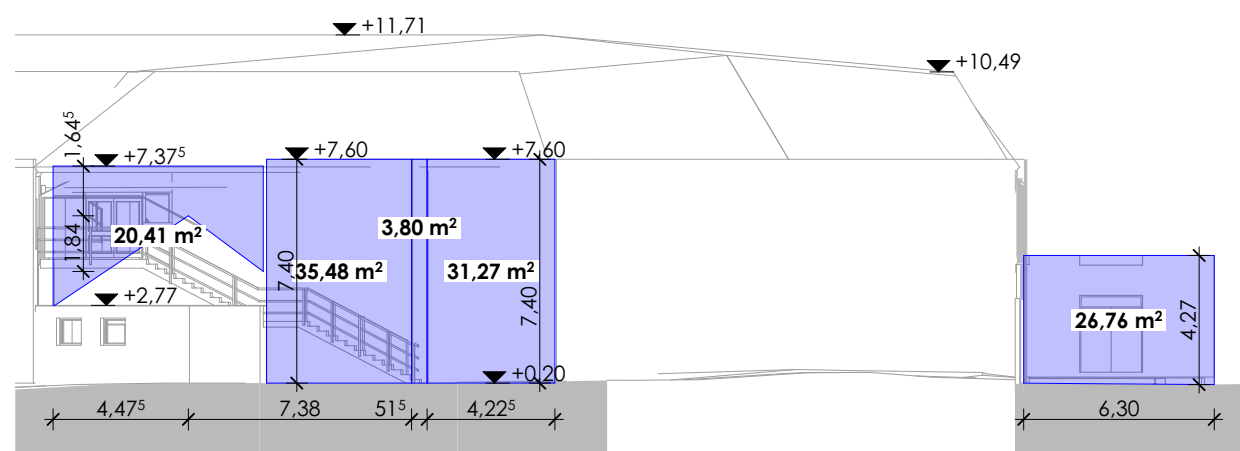


DNY

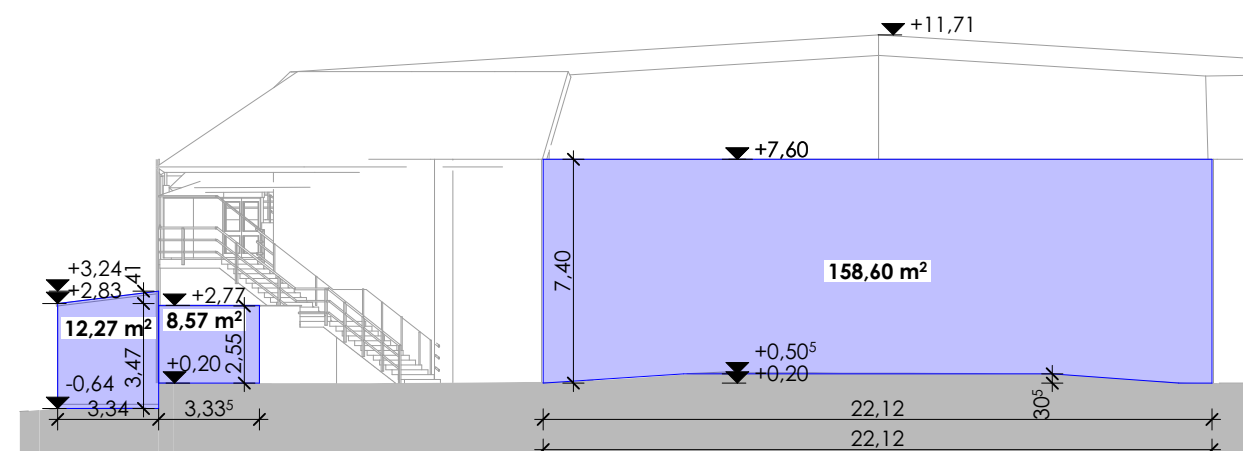




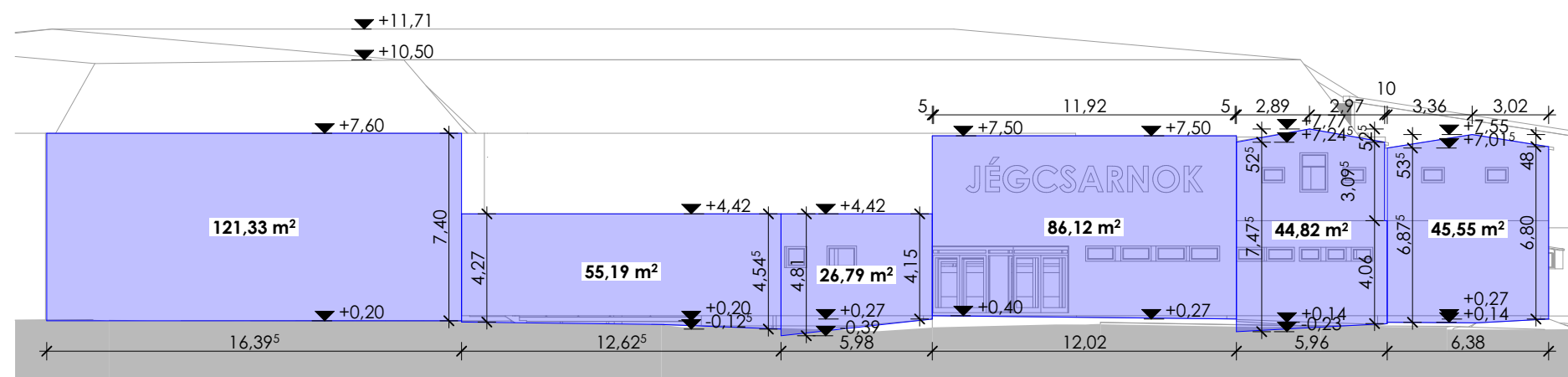
D



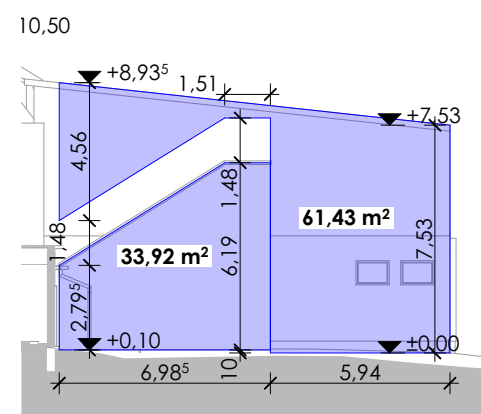
DK



K

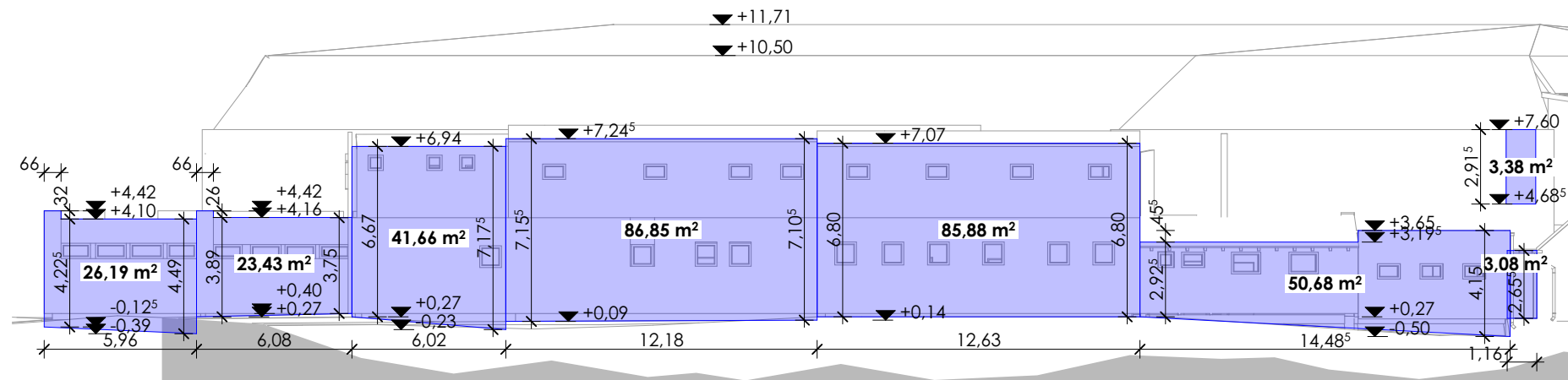


ÉK

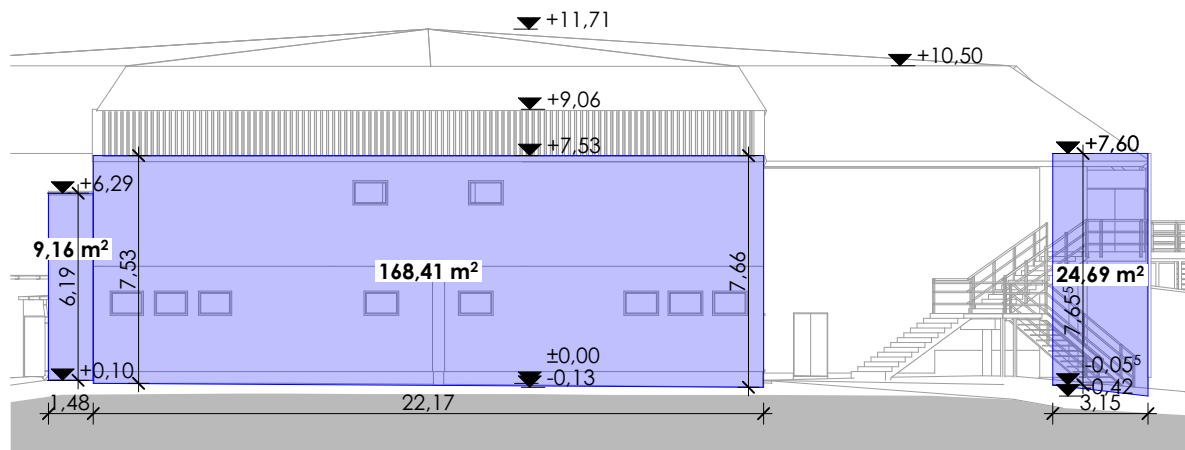


É





ÉNY



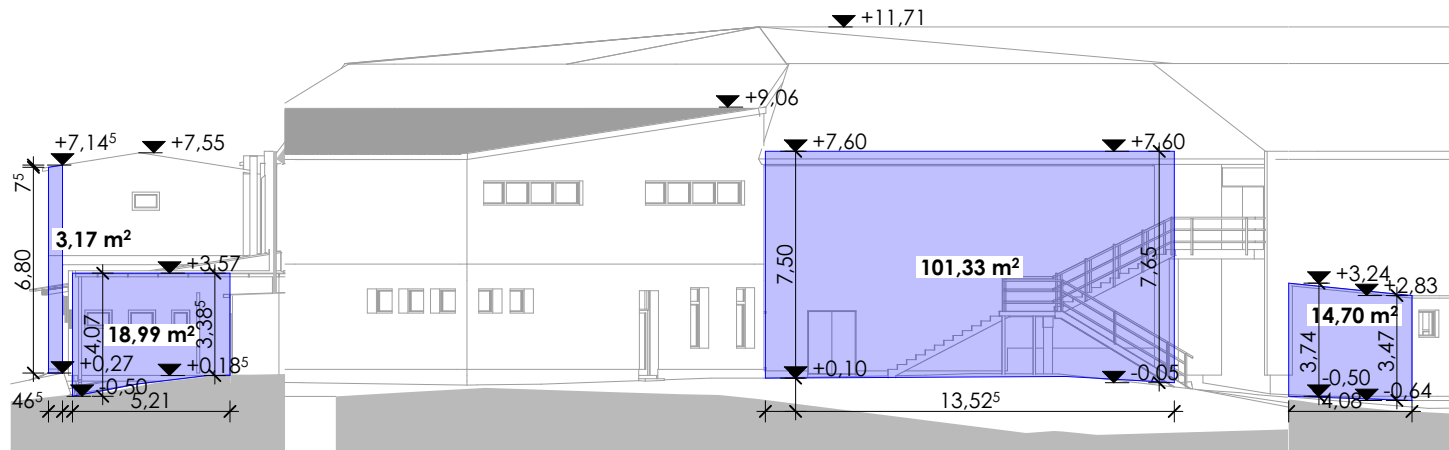
NY

**TERVEZETT BEÉPÍTÉSI MAGASSÁG:**

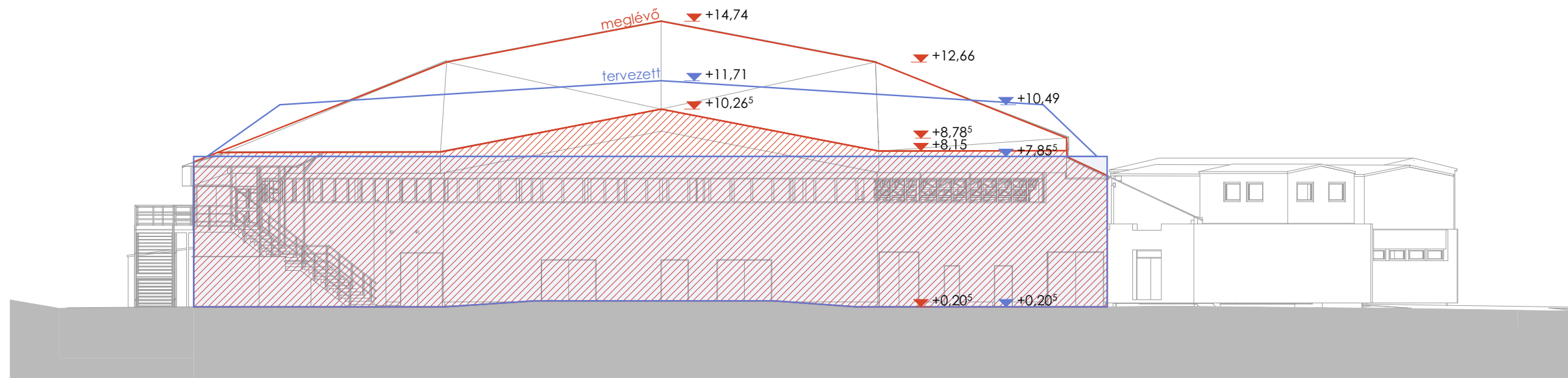
homlokzati felület:  
 $117,02+10,09+51,73+322,67+20,41+35,48+3,80+31,27+26,76+12,27+8,57+158,60+121,33+55,19+26,79+86,12+44,82$   
 $++45,55+33,92+61,43+26,19+23,43+41,66+86,85+85,88+50,68+3,38+3,08+9,16+168,41+24,69+3,17+18,99+101,33+14,70=$   
 $=1935,42 \text{ m}^2$

alaprajzi terület:  
 $14,08+1,32+0,87+14,91+39,93+9,54+6,30+3,34+3,33+22,12+16,40+12,62+5,98+12,02+5,96+6,38+$   
 $+6,98+5,94+5,96+6,08+6,02+12,18+12,63+14,49+1,16+1,48+22,17+3,15+0,46+5,21+13,53+4,08=$   
 $=296,62 \text{ m}$

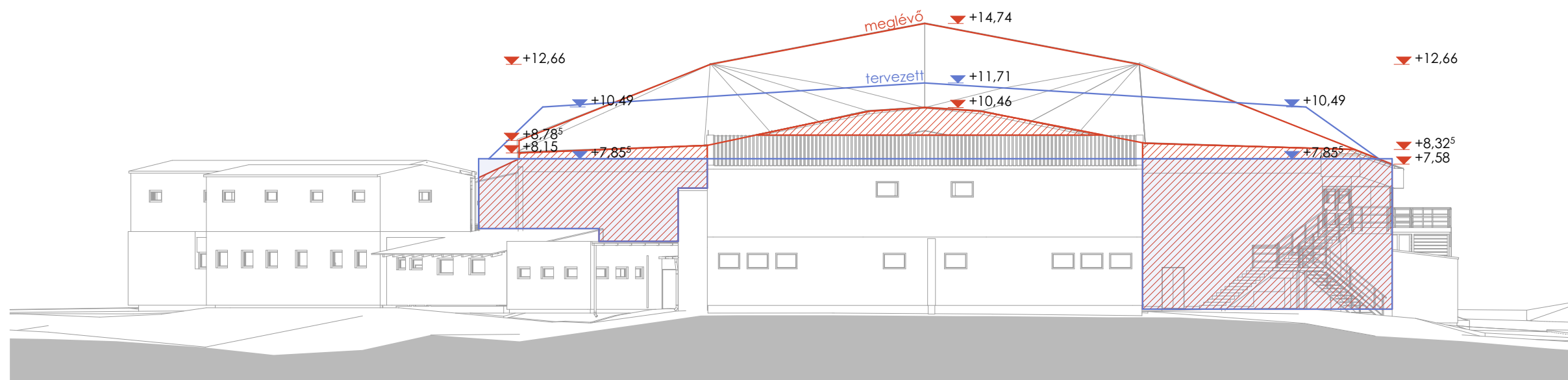
beépítési magasság:  
 $1935,42/296,62 = 6,52 \text{ m}$



DNY

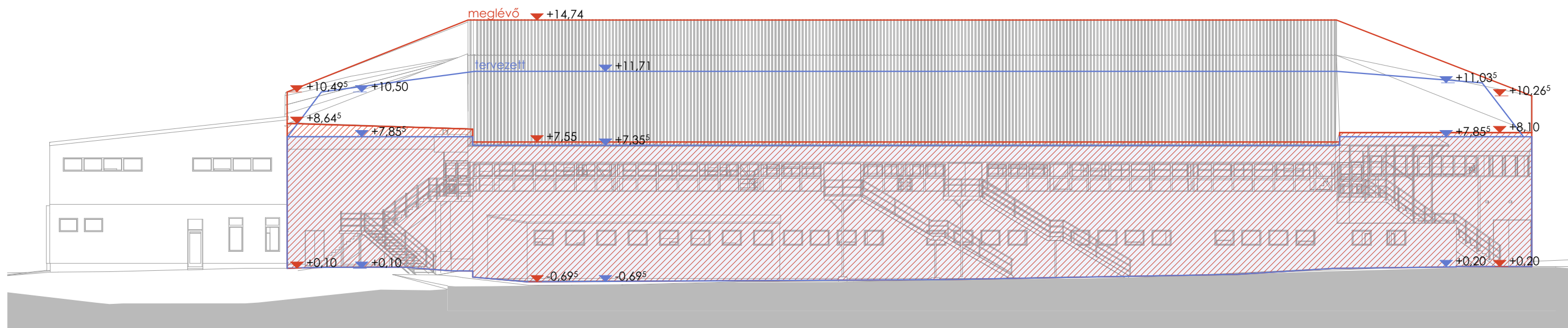


K

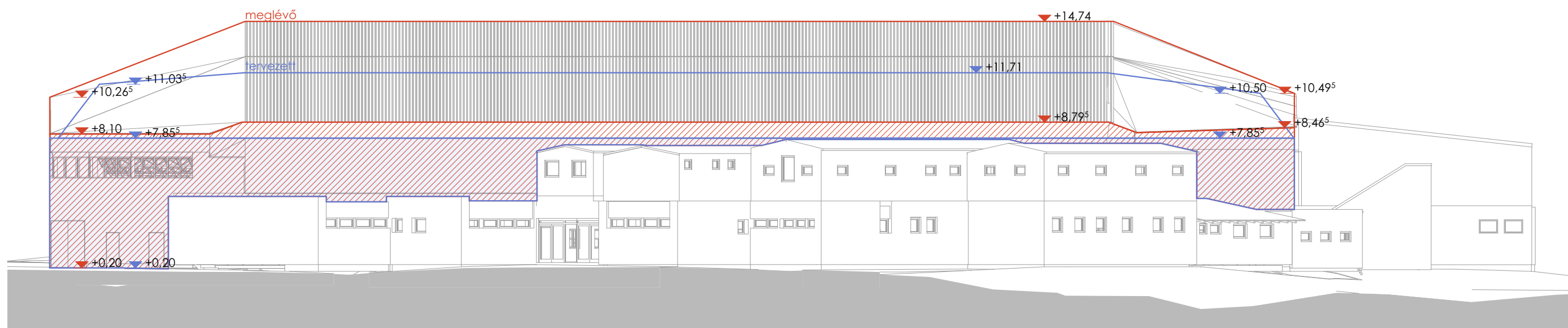


NY

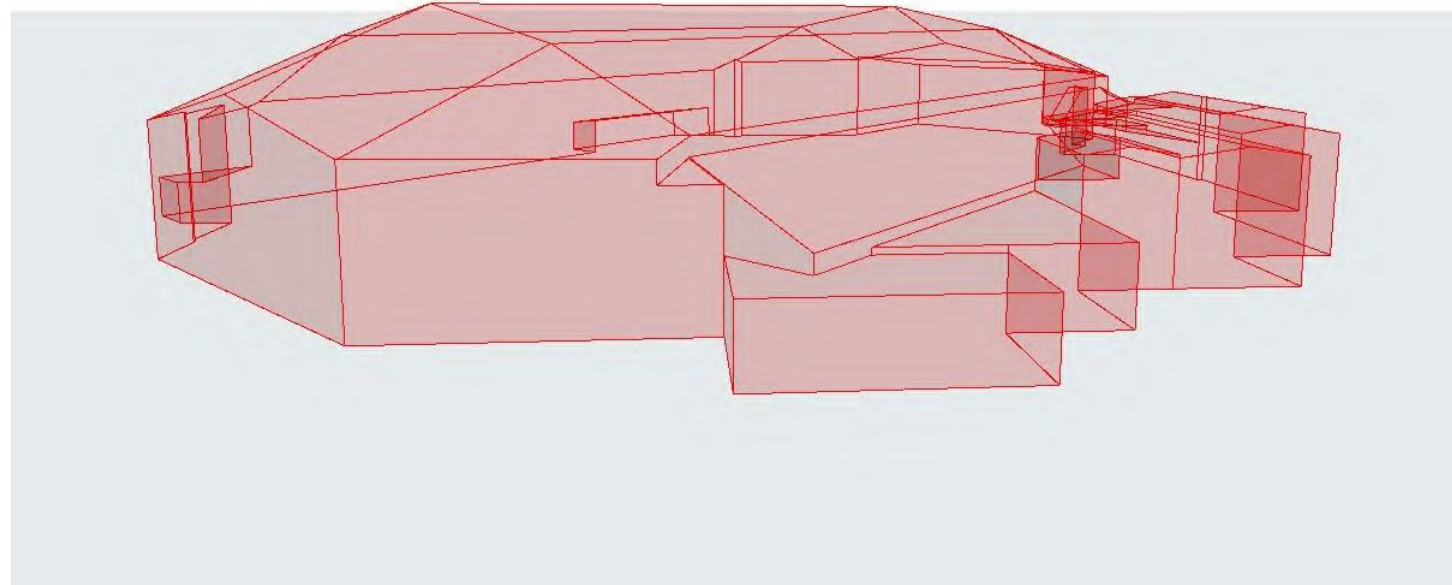




D

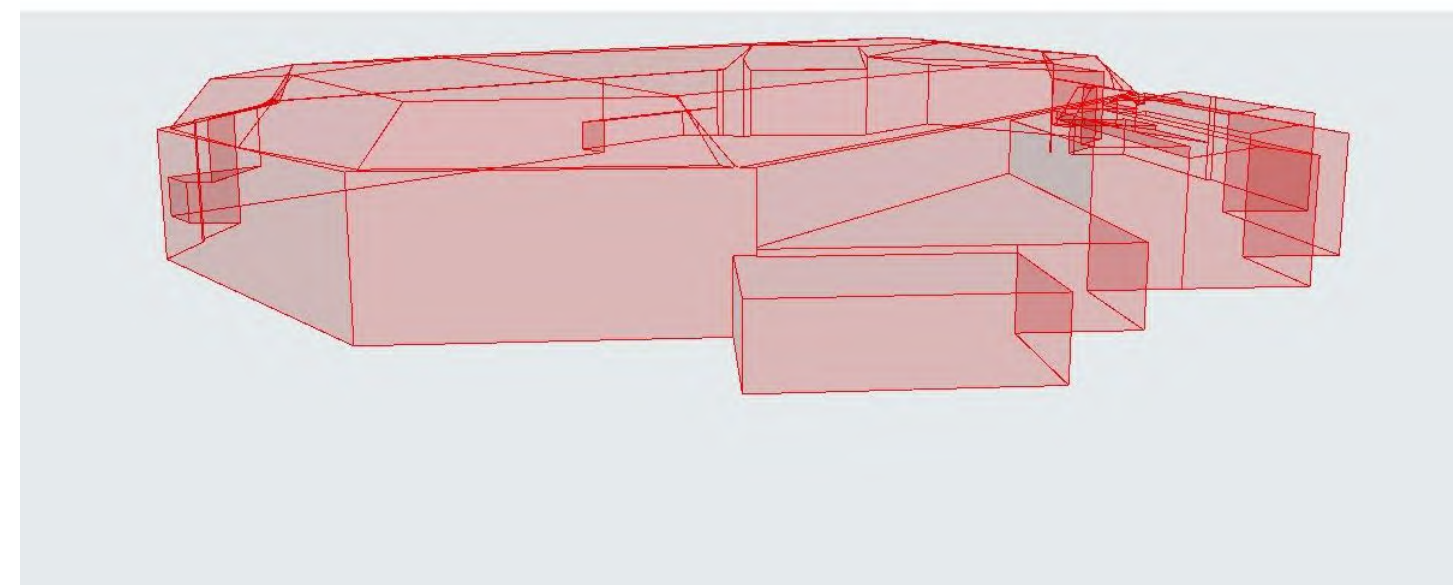


É



**MEGLÉVŐ TÉRFOGAT**

$V = 43\,952\text{ m}^3$



**TERVEZETT TÉRFOGAT**

$V = 40\,916\text{ m}^3$











